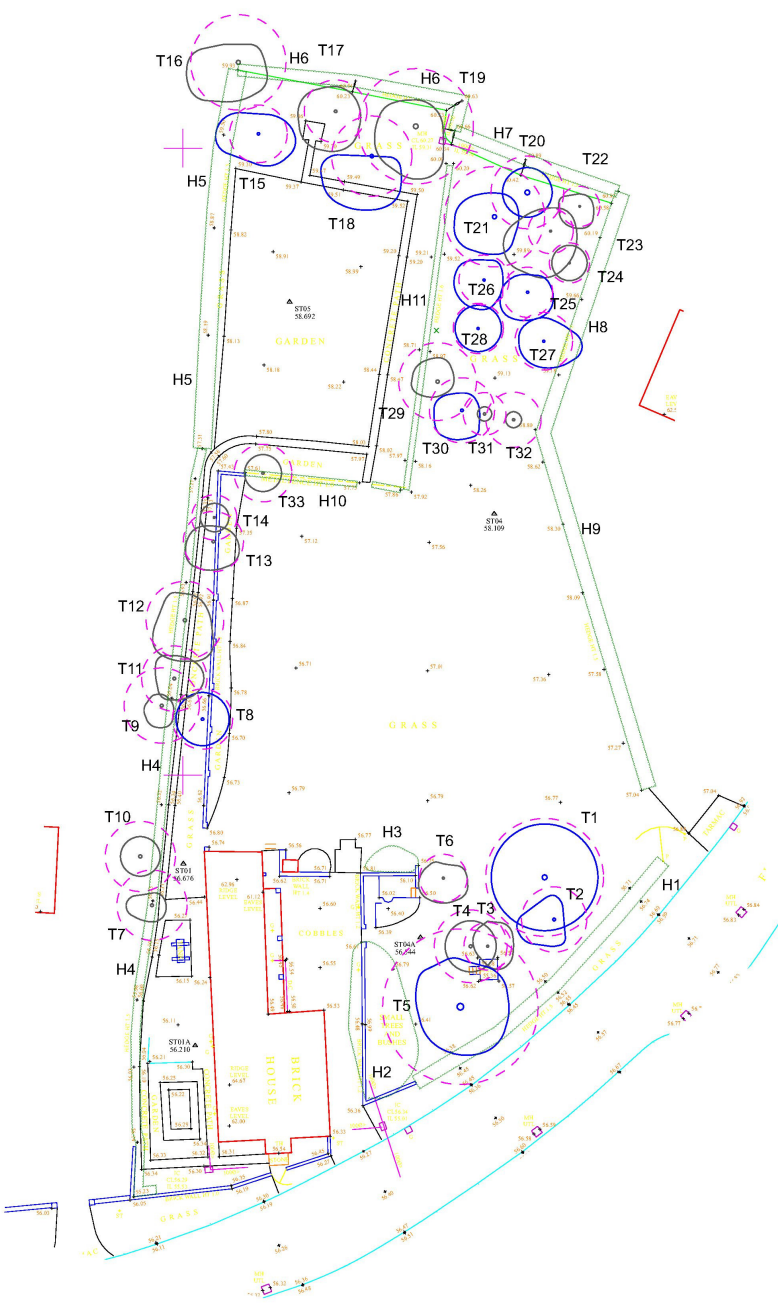
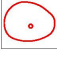
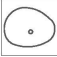
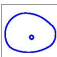

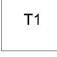

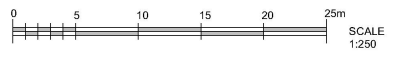


THIS DRAWING MUST BE PRINTED IN COLOUR. Do not scale this drawing (printed or electronic version). Contractors must check all dimensions from site. This drawing remains the copyright of Root3 Associates Ltd and is for use on this site only. This drawing should be read in conjunction with all relevant consultants drawings and specialist subcontractors / supply chain drawings and specifications.

AR-02 Tree Constraints Plan
Scale: 1:250



- KEY**
-  CATEGORY U TREE OR GROUP TO BE REMOVED
 -  CATEGORY C TREE OR GROUP TO BE RETAINED
 -  CATEGORY B TREE OR GROUP TO BE RETAINED
 -  ROOT PROTETCION AREA (RPA)
 -  TREE NUMBERS SEE SCHEDULE IN REPORT R3-543-03-AR-01
 -  HEDGES / SHRUBS



THIS DRAWING MUST BE PRINTED IN COLOUR.
Do not scale this drawing (printed or electronic version). Contractors must check all dimensions from site. This drawing remains the copyright of Root3 Associates Ltd and is for use on this site only. This drawing should be read in conjunction with all relevant consultants drawings and specialist subcontractors / supply chain drawings and specifications.

All works to be carried out in accordance with the latest British Standards / Codes of Practice unless specifically directed otherwise in the specification. Responsibility for the reproduction of this drawing in paper form, or issued in electronic format, lies with the recipient to check that all information has been replicated in full and is correct when compared to the original paper or electronic image. Graphical representations of equipment on this drawing have been co-ordinated, but are approximations only. Please refer to the specifications and / or details for actual sizes and / or specific contractor construction information.

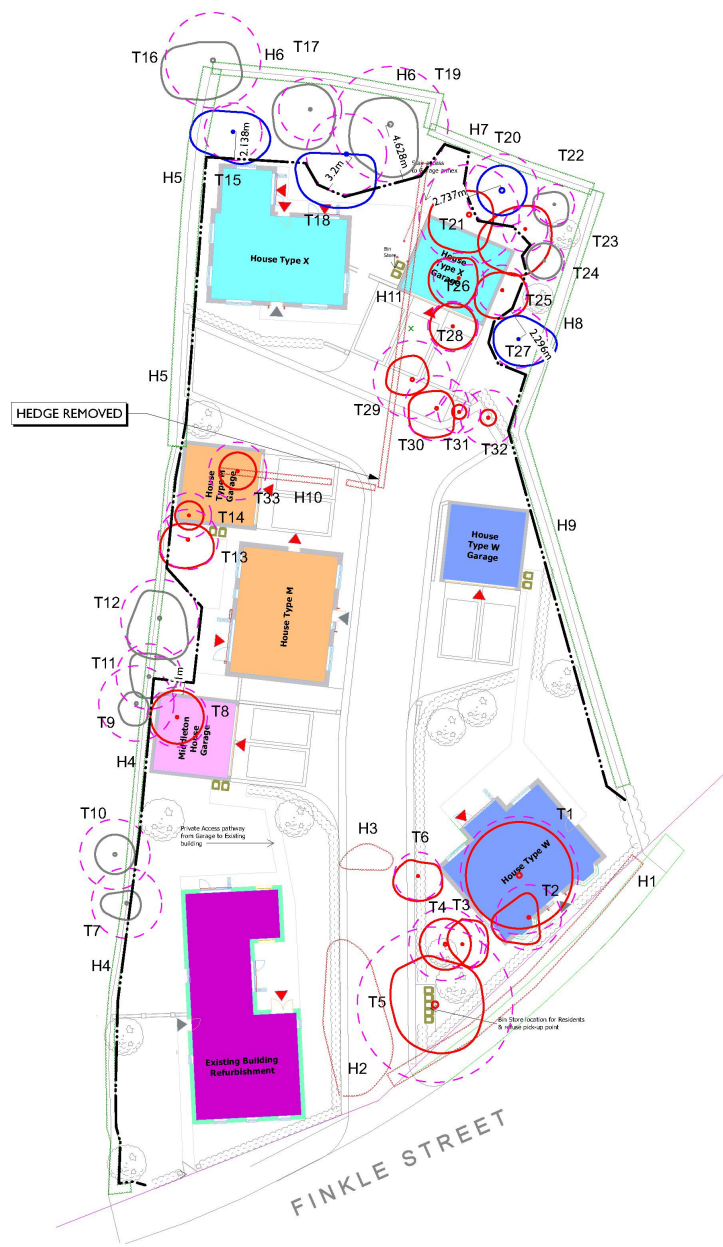
REV	BY	DATE	REV
EM	CHKD	EM	SHT
			DATE
			14.03.22

DWG NO	R3-543-03-AR-02	CLIENT	MR.M.GIBSON	REV	/
--------	-----------------	--------	-------------	-----	---

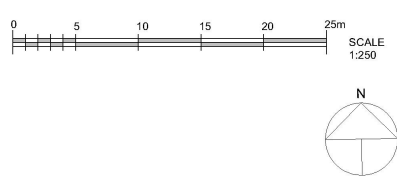
TITLE	TREE CONSTRAINTS PLAN SHERIFF HUTTON	SCALE	1:250 A2
-------	---	-------	----------

root3
Landscape Architecture - Ecology
4-6 Bridge Street - Tadcaster - North Yorkshire - LS24 9AL
www.root-3.com e: info@root-3.com t: 01937 531558

AR-03 Tree Protection and Impacts Plan
Scale: 1:250



- KEY
- CATEGORY U TREE OR TREE GROUP TO BE REMOVED TO FACILITATE DEVELOPMENT
 - CATEGORY C TREE OR GROUP TO BE RETAINED
 - CATEGORY B TREE OR GROUP TO BE RETAINED
 - ROOT PROTECTION AREA (RPA)
 - TREE NUMBERS SEE SCHEDULE IN REPORT R3-543-03-AR-01
 - HEDGES / SHRUBS
 - TREE PROTECTION FENCING - HERAS TYPE CONSTRUCTION EXCLUSION ZONE (CEZ)



THIS DRAWING MUST BE PRINTED IN COLOUR. Do not scale this drawing (printed or electronic version). Contractors must check all dimensions from site. This drawing remains the copyright of Root3 Associates Ltd and is for use on this site only. This drawing should be read in conjunction with all relevant consultants drawings and specialist subcontractors / supply chain drawings and specifications.

All works to be carried out in accordance with the latest British Standards / Codes of Practice unless specifically directed otherwise in the specification. Responsibility for the reproduction of this drawing in paper form, or issued in electronic format, lies with the recipient to check that all information has been replicated in full and is correct when compared to the original paper or electronic image. Graphical representations of equipment on this drawing have been generalised, but are approximations only. Please refer to the specifications and / or details for actual sizes and / or specific contractor construction information.

Update plan to accord with WHARF/WBA-SI-XX-DR-A-PL_021-P2 - Proposed Site Layout		EM	22.4.22	A			
REV		BY	DATE	REV			
BY	EM	CHKD	EM	SHT	/	DATE	14.03.22
DWG NO	R3-543-03-AR-03		CLIENT	MR.M.GIBSON		REV	A
TITLE	TREE PROTECTION AND IMPACTS PLAN SHERIFF HUTTON			SCALE	1:250 A2		
<p>Landscape Architecture - Ecology 4-6 Bridge Street - Tadcaster - North Yorkshire - LS24 9AL www.root-3.com e: info@root-3.com t: 01937 531558</p>							